



The Home of your
Dreams....

SANGITA TOWERS

Project Developed and Marketed By
SANGITAA CONSTRUCTION

PROJECT APPROVED BY RERA AND MAJOR BANKS

AERIAL VIEW

The project is located very close to the Joka Metro Station.

SANGITA TOWERS offer its residents the amenities and luxuries of the city life while at the same time providing the bliss and joyful living of the countryside.

Surrounded by lush green patches, residents will be greeted to the chirping of birds in the early morning.

Precisely designed with complete utilization of space and smartly priced 1, 2 & 3 BHK apartments housed in 4 numbers of G+4 towers along with showroom spaces in the front tower.

SANGITA TOWERS is going to be a landmark in the locality.

It is being constructed by one of the most trusted Group in the sector. SANGITA TOWERS will stand true to the Group's motto and that is to build the *"home of your dreams...."*

1, 2 & 3 BHK HOMES
SHOWROOM SPACE
MORE THAN 50% OPEN AREA



Experience the beauty of urban living

CONNECTIVITY

- Khalpole Bus & Auto Stand- 50 metres
- Joka Metro- 1.4 kms
- SA Bus Stand- 2.1 kms
- Thakurpukur Metro- 2.6 kms
- Behala Chowrasta- 5.2 kms
- Taratata Metro- 7.5 kms
- Majherhat Railway Station- 9.0 kms
- Tollygunge Metro- 9.0 kms
- Esplanade- 15.0 kms

SCHOOLS

- Shri Santoshi Maa Academy- 1.0 km
- Vivekananda Misson School- 1.5 kms
- ST. Mary's Convent School- 1.7 kms
- Kendriya Vidyalaya, Joka- 2.0 kms
- Gems Akademia International School- 3.1 kms
- Pailan World School- 4.4 kms
- Delhi Public School, Joka- 5.7 kms
- National Gems H.S. School- 6.0 kms
- MP Birla Foundation H.S. School- 6.4 kms

COLLEGES

- CMRI Nursing School- 1.1 kms
- IIM, Joka- 1.2 kms
- Vivekananda College- 2.8 kms
- Pailan College of Management- 3.2 kms
- Praxis Business School- 3.2 kms
- Dream Institute of Technology- 5.2 kms

BANKS

- Canara Bank, Hanspukur- 0.6 kms
- State Bank of India IIM, Joka- 1.1 kms
- HDFC Bank, Joka- 1.7 kms
- Indian Overseas Bank, Joka- 1.7 kms
- Karurvysya Bank, Joka- 1.8 kms
- Bandhan Bank, Joka- 1.9 kms
- Punjab National Bank, Thakurpukur- 2.6 kms

RETAIL & ENTERTAINMENT

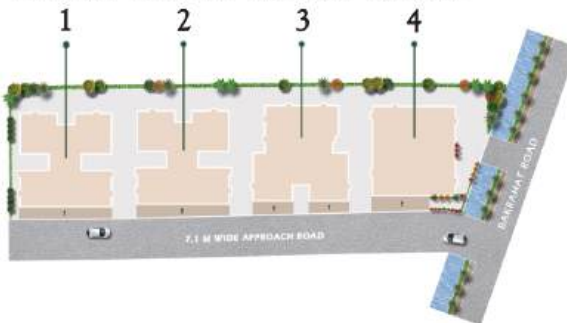
- Acropolis South Mall, Joka- 1.4 kms
- Reliance Smart Point, Joka- 1.4 kms
- More Super Market, Diamond Park- 1.6 kms
- Raspunja Bazar- 1.8 kms
- Thakurpukur Bazar- 2.1 kms
- Reliance Trends, Thakurpukur- 2.8 kms

HOSPITALS

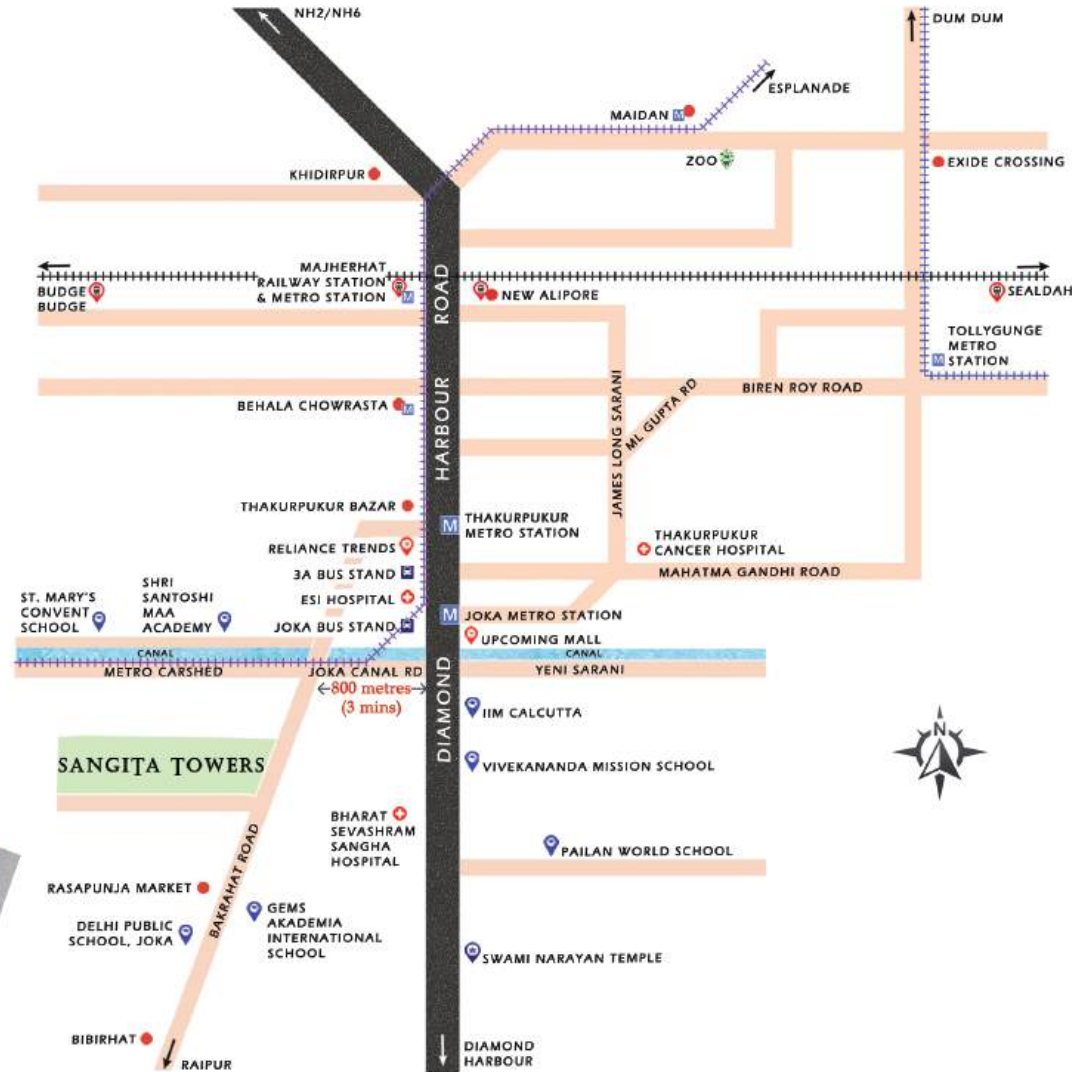
- E.S.I Hospital- 1.5 kms
- Bharat Sevashram Sangha Hospital- 1.9 kms
- Kasturi Nursing Home- 2.1 kms
- Thakurpukur Cancer Hospital- 3.7 kms
- Narayan Memorial Hospital- 6.5 kms

SANGITA TOWERS

BLOCK 1 BLOCK 2 BLOCK 3 BLOCK 4



Location Highlights



Map not to scale



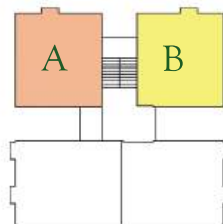
live at the most
attractive
location in the city

SANGITA TOWERS



BLOCK 1 & 2

FLAT A



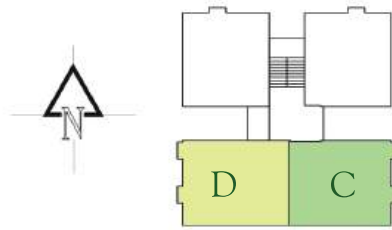
FLAT B



Disclaimer - The furnitures and tiles shown in the plans and images are only for the purpose of illustration and are not part of the offering or specifications.

FLAT NAME	FLAT TYPE	CARPET AREA (Sqft.)	BUILT - UP AREA (Sqft.)	CHARGEABLE AREA (Sqft.)
A	2 BHK	478	597	776
B	2 BHK	476	596	775

FLAT D



FLAT C

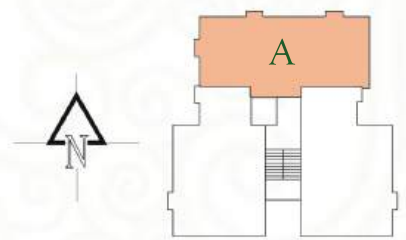


Disclaimer - The furnitures and tiles shown in the plans and images are only for the purpose of illustration and are not part of the offering or specifications.

FLAT NAME	FLAT TYPE	CARPET AREA (Sqft.)	BUILT - UP AREA (Sqft.)	CHARGEABLE AREA (Sqft.)
C	2 BHK	517	643	836
D	2 BHK	535	664	863

BLOCK 3

FLAT A



Disclaimer - The furnitures and tiles shown in the plans and images are only for the purpose of illustration and are not part of the offering or specifications.

FLAT NAME	FLAT TYPE	CARPET AREA (Sqft.)	BUILT - UP AREA (Sqft.)	CHARGEABLE AREA (Sqft.)
A	3 BHK	734	873	1135

SPECIFICATIONS

to make your space feel like home....

LIVING / DINING / PASSAGE

Floor: Vitrified tiles
 Walls & Ceiling: Cement putty finish

BEDROOMS

Floor: Vitrified tiles in bedrooms
 Walls & Ceiling: Cement putty finish

KITCHEN

Walls: Rectified tiles up to 2' - 0" on counter walls and wash areas, balance area to be of Cement putty finish
 Floor: Vitrified tiles
 Counter top: Granite finish
 Fittings / Fixtures: Stainless steel sink with reputed make fittings

BATHROOMS

Walls: Wall tiles up to door height
 Floor: Anti-skid tiles
 Sanitary Ware / CP Fittings: Reputed sanitary ware and fittings

DOORS & WINDOWS

Entrance Doors: Decorated flush doors
 Internal Doors: Flush doors
 Windows: Sliding anodized aluminium windows

ELECTRICAL

Modular switches and concealed copper wiring with TV & Telephone points
 AC points in all bedrooms

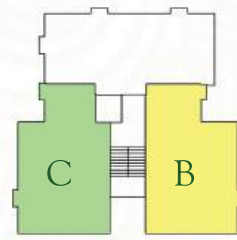
LIFT FACILITY

Lift of reputed make in each block

FACILITIES AT EXTRA CHARGES (MANDATORY)

- 24x7 security
- CCTV Surveillance in Common Areas
- Intercom facility in Apartments
- Power Backup

FLAT C



FLAT B

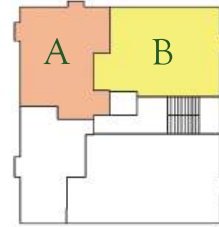


Disclaimer - The furnitures and tiles shown in the plans and images are only for the purpose of illustration and are not part of the offering or specifications.

FLAT NAME	FLAT TYPE	CARPET AREA (Sqft.)	BUILT - UP AREA (Sqft.)	CHARGEABLE AREA (Sqft.)
B	3 BHK	729	859	1117
C	3 BHK	721	850	1105

BLOCK 4

FLAT A



FLAT B



FLAT NAME	FLAT TYPE	CARPET AREA (Sqft.)	BUILT - UP AREA (Sqft.)	CHARGEABLE AREA (Sqft.)
A	2 BHK	485	573	745
B	2 BHK	556	659	857

FLAT D



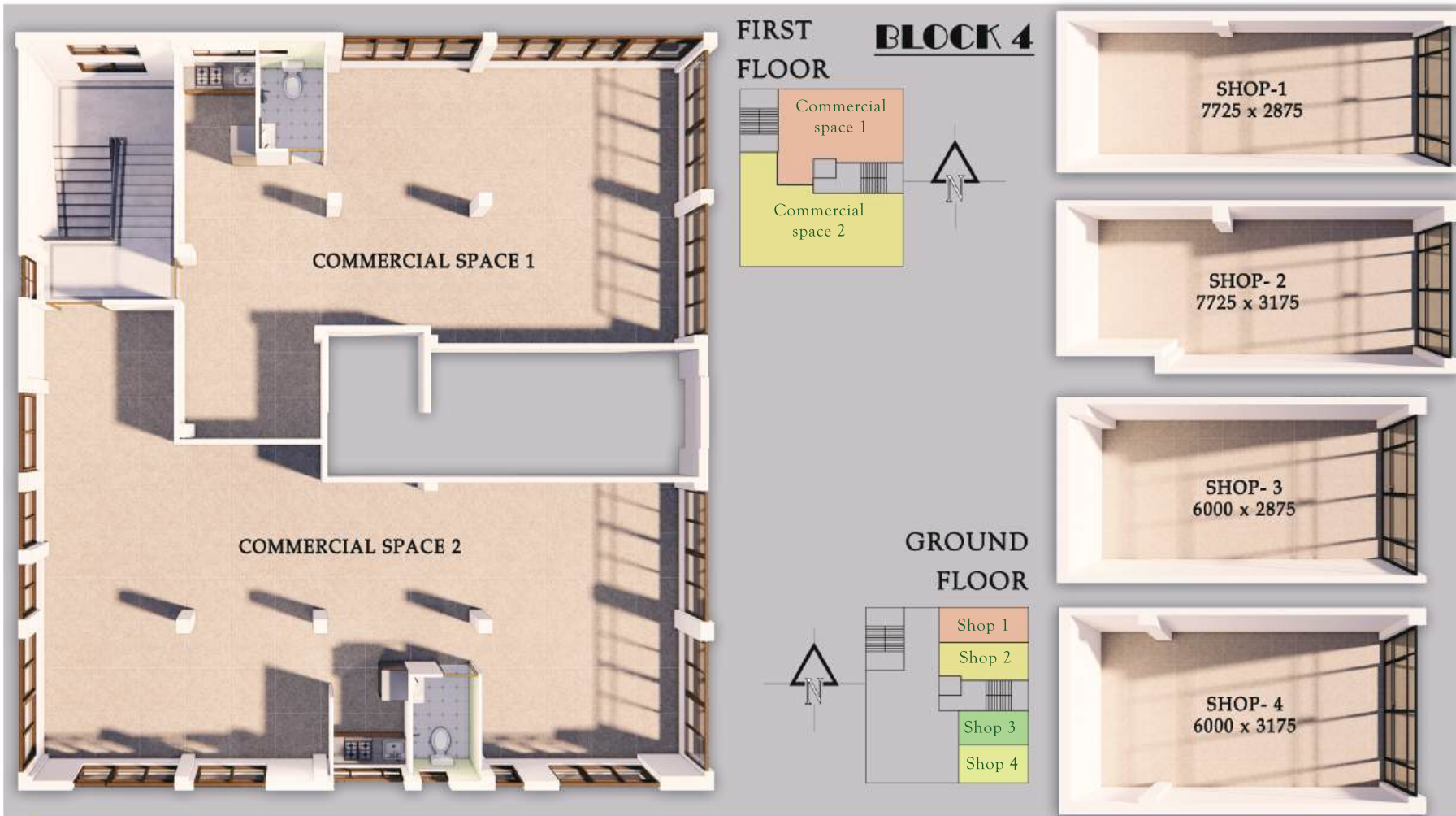
FLAT C



Disclaimer - The furnitures and tiles shown in the plans and images are only for the purpose of illustration and are not part of the offering or specifications.

FLAT NAME	FLAT TYPE	CARPET AREA (Sqft.)	BUILT - UP AREA (Sqft.)	CHARGEABLE AREA (Sqft.)
C	3 BHK	695	821	1067
D	1 BHK	355	421	547





Disclaimer - The furnitures and tiles shown in the plans and images are only for the purpose of illustration and are not part of the offering or specifications.

NAME	CHARGEABLE AREA (Sqft.)
COMMERCIAL SPACE 1	1365
COMMERCIAL SPACE 2	1892
SHOP 1	362
SHOP 2	378
SHOP 3	276
SHOP 4	309



COMMERCIAL SPACES

PROJECT DEVELOPED AND MARKETED BY

SANGITAA CONSTRUCTION

Corporate Address - 309F, Ho-Chi-Minh Sarani, Sarsuna, Kolkata - 700061

SOME OF OUR COMPLETED PROJECTS



DARSHAN TOWERS



SANGITA KUTIR



SANGITAA DAKSHIN



SANGITAA CHHAYANAT



SANGITAA BLOCK-C



SANGITAA BLOCK-B



SANGITAA BLOCK-A



NETAJI EYE HOSPITAL



SARSUNA LAW COLLEGE

A trusted brand having an experience of 15 years in the real estate industry, Sangitaa Construction is one of the renowned names in the real estate industry. Till date, the group has constructed and successfully handed over more than 10 Residential and Commercial projects. The group has a dedicated team of people specializing in their respective fields working round the clock to achieve the best results. Creating a home out of spaces is what the group strives for and it's belief in teamwork has only accentuated it further.

Corporate Address - 309F, Ho-Chi-Minh Sarani, Sarsuna, Kolkata - 700061

RESERVE A VISIT TO THE SITE

Call **84202 08288 / 84206 88288**

Site Address - 131/2, Bakrahat Road, Kolkata - 700104, near JOKA METRO STATION

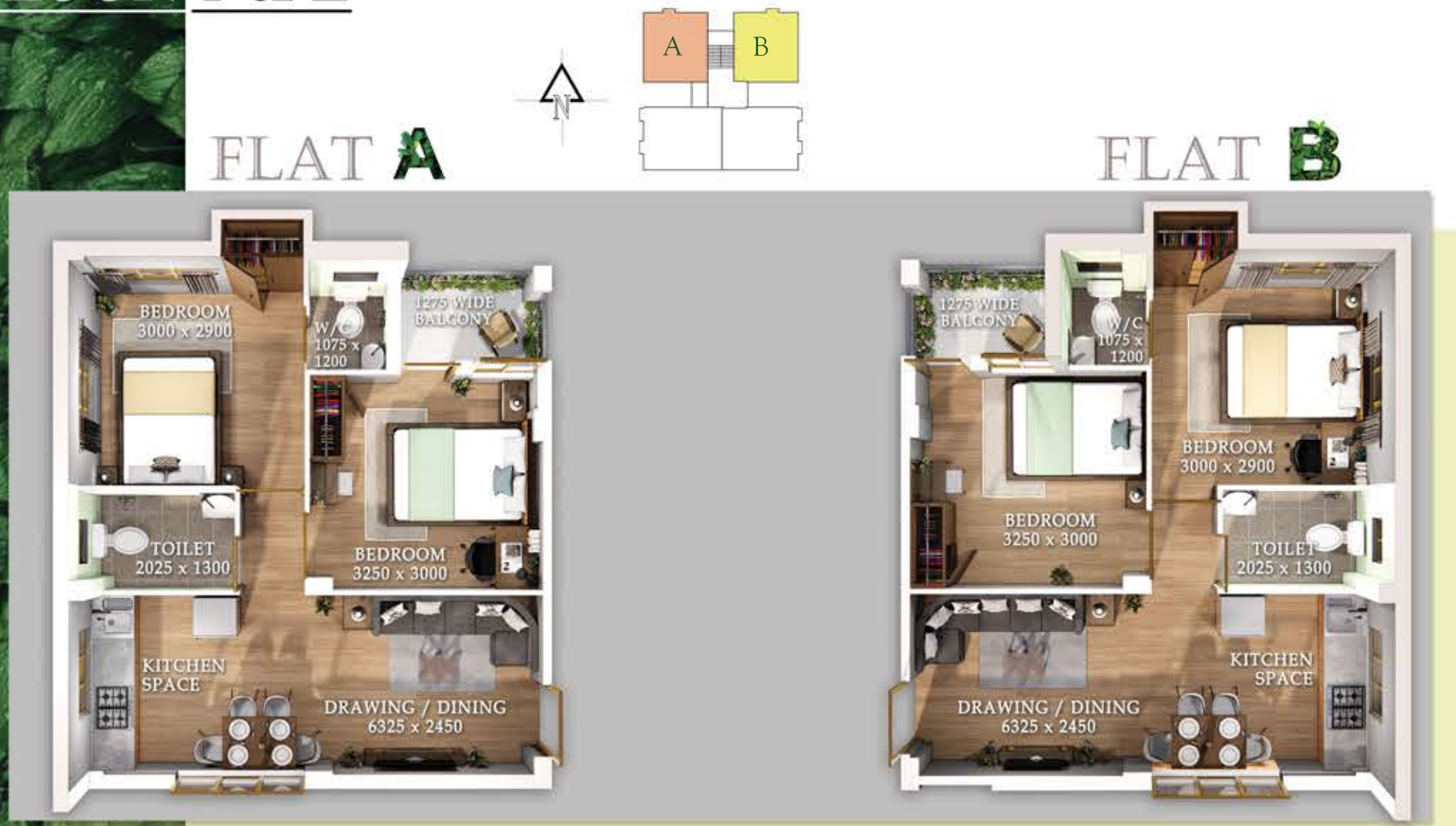
BANK LOAN APPROVED BY



PROJECT ARCHITECT



BLOCK 1 & 2



FLAT NAME	FLAT TYPE	CARPET AREA (Sqft.)	BUILT - UP AREA (Sqft.)	CHARGEABLE AREA (Sqft.)
A	2 BHK	478	597	776
B	2 BHK	476	596	775



FLAT NAME	FLAT TYPE	CARPET AREA (Sqft.)	BUILT - UP AREA (Sqft.)	CHARGEABLE AREA (Sqft.)
C	2 BHK	517	643	836
D	2 BHK	535	664	863

BLOCK 3



FLAT NAME	FLAT TYPE	CARPET AREA (Sqft.)	BUILT - UP AREA (Sqft.)	CHARGEABLE AREA (Sqft.)
A	3 BHK	734	873	1135



FLAT NAME	FLAT TYPE	CARPET AREA (Sqft.)	BUILT - UP AREA (Sqft.)	CHARGEABLE AREA (Sqft.)
B	3 BHK	729	859	1117
C	3 BHK	721	850	1105

SPECIFICATIONS

to make your space feel like home....

LIVING / DINING / PASSAGE
 Floor: Vitrified tiles
 Walls & Ceiling: Cement putty finish

BEDROOMS
 Floor: Vitrified tiles in bedrooms
 Walls & Ceiling: Cement putty finish

KITCHEN
 Walls: Rectified tiles up to 2' - 0" on counter walls and wash areas, balance area to be of Cement putty finish
 Floor: Vitrified tiles
 Counter top: Granite finish
 Fittings / Fixtures: Stainless steel sink with reputed make fittings

BATHROOMS
 Walls: Wall tiles up to door height
 Floor: Anti-skid tiles
 Sanitary Ware / CP Fittings: Reputed sanitary ware and fittings

DOORS & WINDOWS
 Entrance Doors: Decorated flush doors
 Internal Doors: Flush doors
 Windows: Sliding anodized aluminium windows

ELECTRICAL
 Modular switches and concealed copper wiring with TV & Telephone points
 AC points in all bedrooms

LIFT FACILITY
 Lift of reputed make in each block

FACILITIES AT EXTRA CHARGES (MANDATORY)
 24x7 security
 CCTV Surveillance in Common Areas
 Intercom facility in Apartments
 Power Backup

BLOCK 4



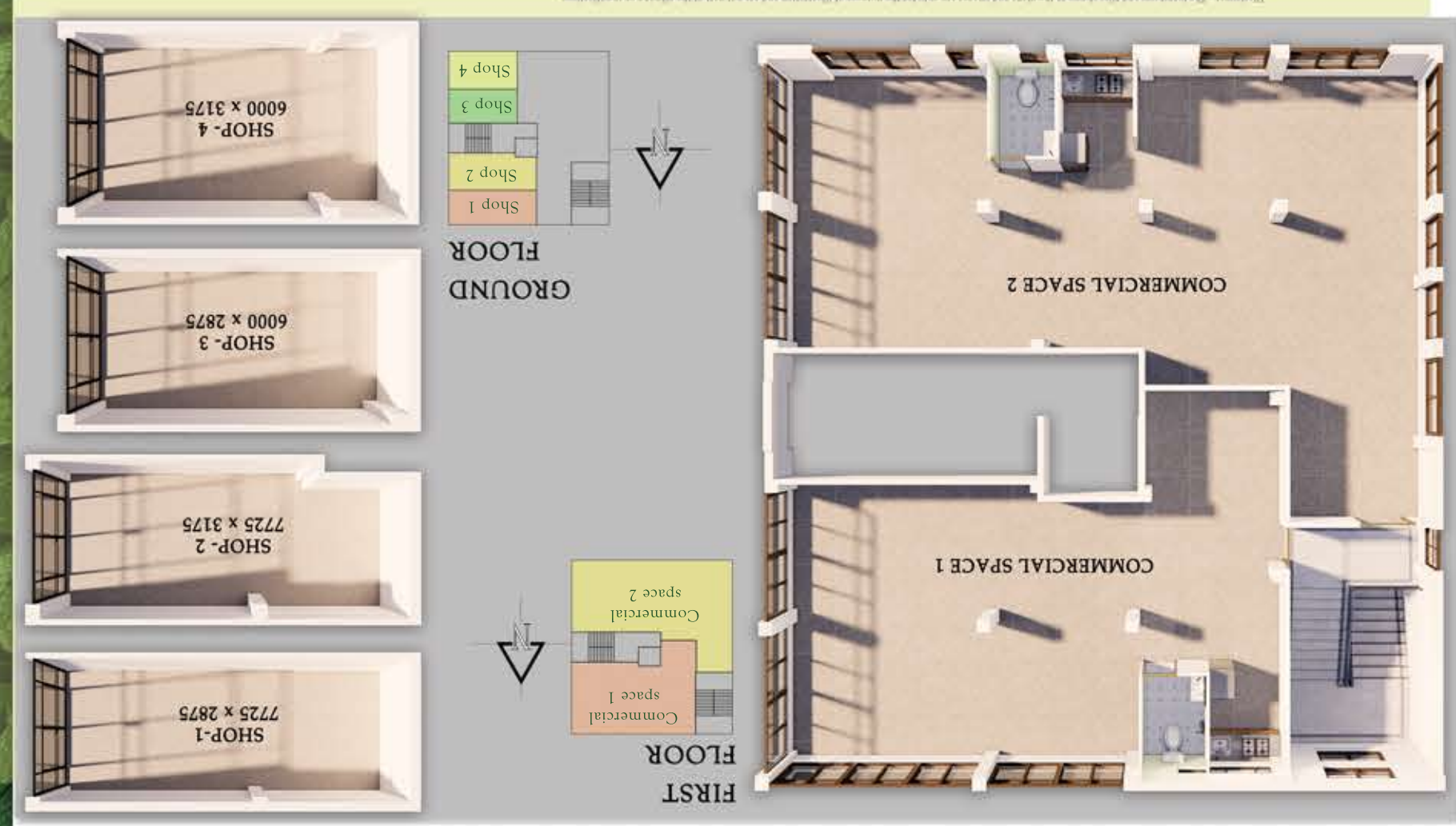
FLAT NAME	FLAT TYPE	CARPET AREA (Sqft.)	BUILT - UP AREA (Sqft.)	CHARGEABLE AREA (Sqft.)
A	2 BHK	485	573	745
B	2 BHK	556	659	857



FLAT NAME	FLAT TYPE	CARPET AREA (Sqft.)	BUILT - UP AREA (Sqft.)	CHARGEABLE AREA (Sqft.)
C	3 BHK	695	821	1067
D	1 BHK	355	421	547



NAME	CHARGEABLE AREA (Sqt.ft.)
COMMERCIAL SPACE 1	1365
COMMERCIAL SPACE 2	1892
SHOP 1	362
SHOP 2	378
SHOP 3	276
SHOP 4	309



1, 2 & 3 BHK HOMES
SHOWROOM SPACE
MORE THAN 50% OPEN AREA

"Home of your dreams..." and that is to build the most trusted Group in the sector. SANGITA TOWERS will be a landmark in the locality. SANGITA TOWERS is going to spaces in the front tower. towers along with showroom priced 1, 2 & 3 BHK apartments utilization of space and smartly Precisely designed with complete morning. SANGITA TOWERS is going to the chirping of birds in the early es, residents will be greeted to Surrounded by lush green patch countryside. bliss and joyful living of the the same time providing the luxuries of the city life while at residents the amenities and SANGITA TOWERS offer its to the Joka Metro Station. The project is located very close

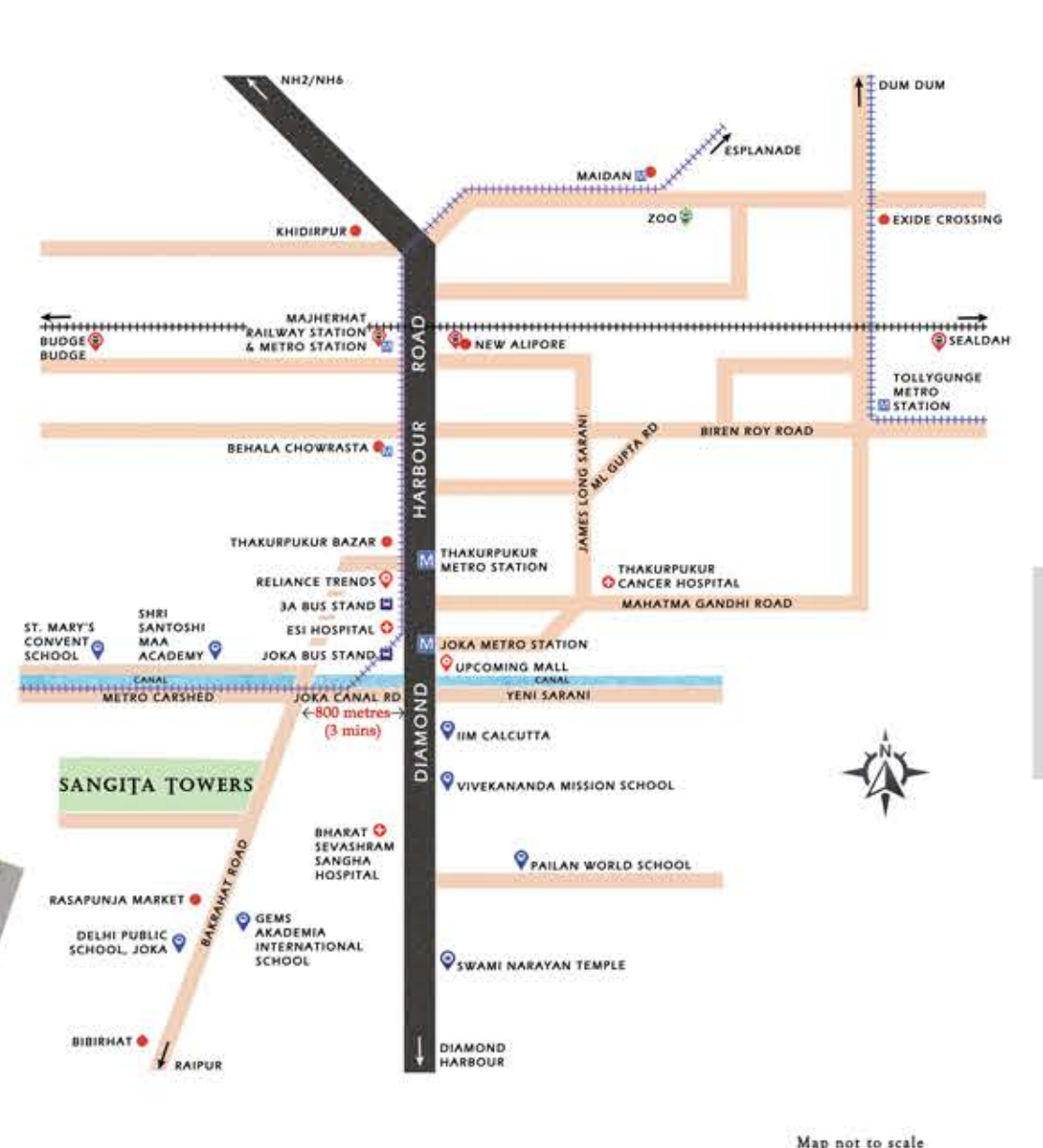
SANGITA TOWERS

Live at the most attractive location in the city

- CONNECTIVITY**
- Khalpola Bus & Auto Stand- 40 metres
 - Joka Metro- 1.4 kms
 - SA Bus Stand- 2.1 kms
 - Thakurpukur Metro- 2.6 kms
 - Behala Chowrasta- 5.2 kms
 - Taratala Metro- 7.5 kms
 - Majherhat Railway Station- 9.0 kms
 - Tollygunge Metro- 9.0 kms
 - Espanade- 15.0 kms
- SCHOOLS**
- Shri Santoshi Maa Academy- 1.0 km
 - Vivekananda Mission School- 1.5 kms
 - ST. Mary's Convent School- 1.7 kms
 - Kendriya Vidyalaya, Joka- 2.0 kms
 - Gems Akademia International School- 8.1 kms
 - Pailan World School- 4.4 kms
 - Delhi Public School, Joka- 5.7 kms
 - National Gems H.S. School- 6.0 kms
 - MP Birla Foundation H.S. School- 6.4 kms
- COLLEGES**
- CMRI Nursing School- 1.1 kms
 - IIM, Joka- 1.2 kms
 - Vivekananda College- 2.8 kms
 - Pailan College of Management- 5.2 kms
 - Praxis Business School- 3.2 kms
 - Dream Institute of Technology- 5.2 kms
- BANKS**
- Canara Bank, Hanspukur- 0.6 kms
 - State Bank of India IM, Joka- 1.1 kms
 - HDFC Bank, Joka- 1.7 kms
 - Indian Overseas Bank, Joka- 1.7 kms
 - Karurvyysya Bank, Joka- 1.8 kms
 - Bandhan Bank, Joka- 1.9 kms
 - Punjab National Bank, Thakurpukur- 2.6 kms

Location Highlights

- RETAIL & ENTERTAINMENT**
- Acropolis South Mall, Joka- 1.4 kms
 - Reliance Smart Point, Joka- 1.4 kms
 - More Super Market, Diamond Park- 1.6 kms
 - Raspunja Bazar- 1.8 kms
 - Thakurpukur Bazar- 2.1 kms
 - Reliance Trends, Thakurpukur- 2.8 kms
- HOSPITALS**
- E.S.I Hospital- 1.5 kms
 - Bharat Sevashram Sangha Hospital- 1.9 kms
 - Kasturi Nursing Home- 2.1 kms
 - Thakurpukur Cancer Hospital- 3.7 kms
 - Narayan Memorial Hospital- 6.5 kms



PROJECT DEVELOPED AND MARKETED BY
SANGITAA CONSTRUCTION
Corporate Address - 309F, Ho-Chi-Minh Sarani, Sarsuna, Kolkata - 700061

SOME OF OUR COMPLETED PROJECTS



A trusted brand having an experience of 15 years in the real estate industry, Sangitaa Construction is one of the renowned names in the real estate industry. Till date, the group has constructed and successfully handed over more than 10 Residential and Commercial projects. The group has a dedicated team of people specializing in their respective fields working round the clock to achieve the best results. Creating a home out of spaces is what the group strives for and it's belief in teamwork has only accentuated it further.

Corporate Address - 309F, Ho-Chi-Minh Sarani, Sarsuna, Kolkata - 700061

RESERVE A VISIT TO THE SITE
Call **84202 08288 / 84206 88288**

Site Address - 131/2, Bakrahat Road, Kolkata - 700104, near JOKA METRO STATION

BANK LOAN APPROVED BY

PROJECT ARCHITECT
AKASHDEEP DESIGN STUDIO
ARCHITECTS . ENGINEERS . PLANNERS . DESIGNERS
Address - 852/2, James Long Sarani, Joka Metro Station, Kolkata - 700104

Disclaimer: This document only describes the intent, purpose and concept of the Group. All images are the architect's expression and are for illustrative purpose only. The group reserves the right to make variations and modifications as and when required.



The Home of your Dreams....

SANGITA TOWERS

Project Developed and Marketed By **SANGITAA CONSTRUCTION**

PROJECT APPROVED BY RERA AND MAJOR BANKS